



Communal Courtyard Garden
Densely planted garden space with option of seating and staying spaces.

Link to open space
Visual and physical link through open space.

Plaza space with seating sub spaces

Birch + Pine grove buffer
Raised planter with dense grove of birch and pine trees as a buffer between seating spaces and N11

Shared surface to incorporate the car park access into the streetscape design and accommodate multiple uses.

Fire tender access route incorporated into the landscape design of street and open space.

Bin Marshalling Area

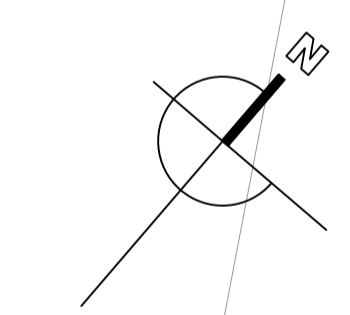
Natural Play Area
Central play space designed using natural play principles. Use of mounding, stepping stones, climbing poles and balance beams. Seating spaces are provided around the perimeter of the play area.

Buffer planting to provide a separation zone between the footpath and residences.

Existing trees retained. Tag number referenced to Tree Survey Report

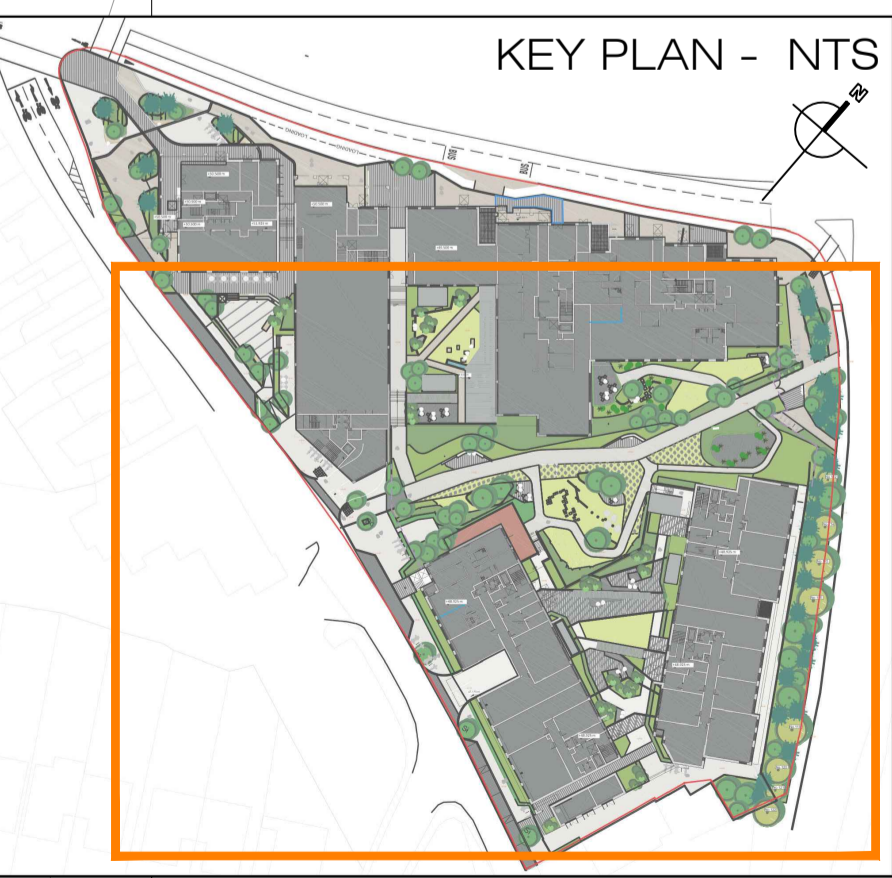
Small secluded seating spaces using planting and trees to create a comfortable staying space. Space is further defined by a change in surface material.

Selected existing trees retained and area enhanced with additional planting to create a biodiversity rich corridor



Legend and Planting List

- Plain to-be cast concrete surface
- Horizontal fine brush finish
- Exposed Aggregate to be cast concrete surface
- Concrete slab with select aggregate mix. Ground finish
- Reposed aggregate finish
- Faience Stone Paving
- Colour paving stone. Flamed surface finish.
- Type: Gira Alva European granite
- Recess Stone Paving
- Reconstituted stone slabs with ground finish. Medium sized units. Colour: buff / silver
- Stone Slabs
- Variety slabs. Small cube units with sawn edge. Flamed surface finish. Colour: buff / silver
- Stone Band
- Granite paving laid as 150mm wide band. Laid flush with adjoining surface. Flamed surface finish. Colour: dark grey
- Sealing wall
- Timber seal on blockwork wall with render finish and concrete coping
- Fine Gravel Surface
- Bathysuk gravel fines laid in compacted layers
- Reinforced Grass Surface
- Reinforced homogeneous HEPF system, infilled with compost and grass seeds. As occasional vehicular surface.
- Cycle Stand
- Standard style cycle stand. 316 grade stainless steel with brushed finish. Roof free
- Existing Tree
- To be protected, retained and incorporated into landscape scheme.
- Medium Tree Planting
- To be planted at 1.5m spacing, 3m dia, 4-6m high, 3m clear stem. To be of the following species:
 - Alnus glutinosa (Alder)
 - Alnus x quercifolia (Alder x oak leaf tree variety)
 - Betula pendula (Birch)
 - Malus domestica 'Eve's Apple'
 - Prunus avium (Alder Cherry)
 - Prunus domestica (Damson)
 - Prunus spinosa (Prickly Bush)
 - Sorbus intermedia 'Brouwers'
- Pinus Tree Planting
- To be planted at 2.0m spacing. To be of the following species:
 - Pinus sylvestris 'Norska' for public realm areas
 - Pinus sylvestris to native planting belt
- Small Trees / Specimen Shrubs
- To be of the following species:
 - Avicula nitida, min 2 breaks, 3rd, 4th, 5th, 1.25m clear stem
 - Amelanchier (Amelanchier), 3 breaks, min 8 breaks, 3rd, 4th, 5th, 2-2.5m
 - Ribes cynosbati, min 3 breaks, 3rd, 4th, 5th, 1.5m clear stem
 - Corylus avellana, 3 breaks, min 2 breaks, 3rd, 4th, 5th, 2.5-3m.
- Shrub Planting
- To be selected from following:
 - Abutilon x grandiflorum
 - Buxus sempervirens (Box)
 - Citrus x hybridus (Rock Rose)
 - Cornus alba 'Sibirica' (Red Stained Dogwood)
 - Catalpa bignonioides 'Karl Foerster'
 - Hydrangea 'Endless Summer'
 - Hebe aquilifolia (Japanese Privet)
 - Ligustrum vulgare (Common Privet)
 - Malus domestica 'Eve's Apple'
 - Salix herbacea (Willow)
 - Sorbus intermedia 'Brouwers'
- Formal Hedge Planting
- To be selected from following:
 - Cornus stolonifera
 - Cotoneaster horizontalis
 - Fagus sylvatica
 - Prunus laurocerasus
- Bamboo Planting
- Thin specimens planted as a continuous belt.
- Groundcover Planting
- To be selected from following:
 - Herbaceous plants to be planted throughout in groups of 3 and 5
 - Bulbs to be planted throughout in groups of 7 and 9
 - To be selected from following:
 - Carex flacca
 - Festuca ovina
 - Lolium perenne
 - Poa annua
 - Stachys recta
 - Trifolium repens
- Groundcover + Grasses
- To be selected from following:
 - Carex flacca
 - Festuca ovina
 - Lolium perenne
 - Poa annua
 - Stachys recta
 - Trifolium repens
- Herbaceous Plants
- To be selected from following:
 - Alumina
 - Centaurea jacobina
 - Lupinus albus
 - Rudbeckia hirta
 - Salix herbacea
 - Sorbus intermedia 'Brouwers'
- Bulb Planting
- To be selected from following:
 - Allium
 - Crocus
 - Gaillardia
 - Hyacinthus
 - Narcissus
 - Scilla
 - Stachys recta
 - Trifolium repens
- Low Carpet Planting
- Planting in single species swathes, with groups of bulbs and perennials throughout.
- To be selected from following:
 - Deschampsia cespitosa
 - Festuca ovina
 - Poa annua
 - Stachys recta
 - Trifolium repens
- Grass Seeding
- Mowed as an ornamental lawn
- 1.5m x 1.5m High Steel Railing
- Refer to page 102 for details



REV	DATE	BY	DESCRIPTION
B	25.03.22	KF	Final Planning Application
A	14.12.21	KF	Pre-Planning Application

THIS DRAWING IS COPYRIGHT ©

notes: DO NOT SCALE. Figured dimensions only to be taken from this drawing.

Job No.	Date	Scale	Status	PLANNING
0377	25/03/22	1:250 @ A1 / 1:500 @ A3	Planned	PLANNING
			Drawn	Checked
			102	
				B

10 Mixed Use Development at Blakes, Stillorgan for Cairn Homes

101 Landscape Masterplan - Sheet 2 Communal Open Space

Kevin Fitzpatrick | Landscape Architecture

4 Main Street, Raheny, Dublin 5, E: info@kfa.ie, W: www.kfa.ie