



Access gate controlled by key fob.

Edge of podium. Glass balustrade to level change to public open space below.

Small seating space using planting and trees to create a comfortable staying space. Orientated towards the south with a bamboo backdrop and a view over the small central lawn.

Small lawn space in centre of courtyard garden to create an open space and to provide potential space for toddler play.

Buffer planting to provide a separation zone between the footpath and residences.

Small secluded seating space using planting and trees to create a comfortable staying space. Orientated towards the south surrounded by planting of soft texture grasses and flowering perennials to create an attractive focal space.

Central garden space is defined by a chance in surface material to a paving unit.

Access gate controlled by key fob.

1.1m high plain steel railing, black and formal evergreen hedge

Access gate controlled by key fob.

Buffer planting to provide a separation zone between the footpath and residences including a formal clipped hedge as a barrier.

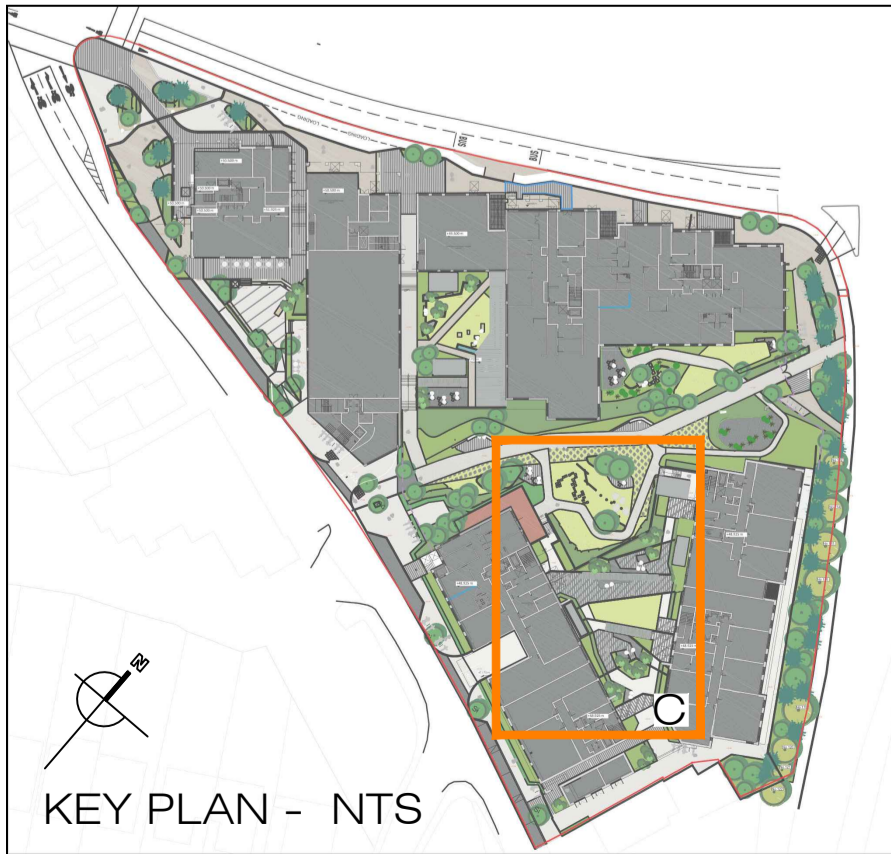
Small secluded seating space with views over main public open space and playground. Semi-seclusion created by tall specimen shrubs trees and raised planter.

Bands of tall bamboos to create visual screen and create spatial barriers.

Raised planters or mounding to facilitate tree planting over podium.

Access gate controlled by key fob. Pedestrian and vehicular access gate.

Existing boundary wall retained



KEY PLAN - NTS

| | | | | | |
|--------------------------------------------|--------------------------------------------------------------|---------------------------------------------------------------|-------|--------|----------|
| Job | Mixed Use Development at Blakes, Stillorgan, for Cairn Homes | Scale | 1:200 | Status | PLANNING |
| Date | 25.03.22 | Drn | SK | Chd | KF |
| Drawn | SK | Checked | KF | Passed | |
| Job No. | 0286 | Drawing No. | 105 | Rev. | B |
| Kevin Fitzpatrick Landscape Architecture | | 4 Main Street, Raheny, Dublin 5, E- info@kfa.ie W- www.kfa.ie | | | |

| | | | |
|-----|----------|-------|----------------------------|
| REV | DATE | DRAWN | DESCRIPTION |
| B | 25.03.22 | SK | Final Planning Application |
| A | 06.12.21 | SK | Pre-Planning Application |