



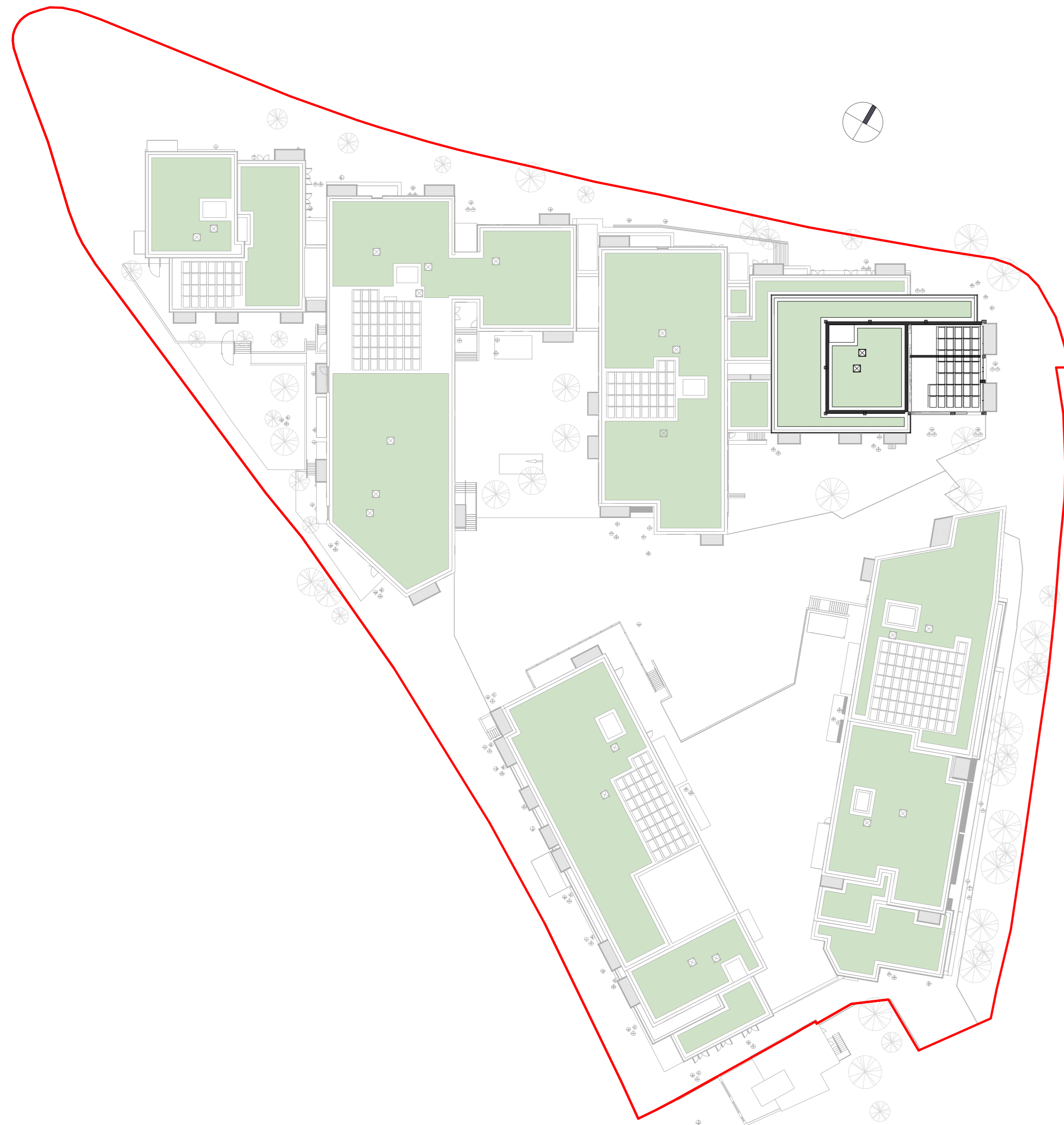
① 06 - Level 06 (Dual Aspect Units)  
1:500



② 07 - Level 07 (Dual Aspect Units)  
1:500



③ 08 - Level 08 (Dual Aspect Units)  
1:500



④ RL - Roof Plan (Dual Aspect Units)  
1:500

Dual Aspect Units Floor 06 to RL

**General Note:**

For Information - North point and levels as per layout drawing

Revision Description	Date	Rev. No.	Issued by
Issued for Planning	29-03-2022	1	PK

<p><b>architecture   urban design</b> Dublin          email: info@mahonypike.com The Chapel          tel: +353 1 202 7400 Mount St. Anne's          fax: +353 1 283 0832 Milltown, Dublin 6          www.mahonypike.com 000 NWS Ireland</p>	<p><b>Cork</b>          One South Mall          Cork City          Co. Cork          T12 CCN3 Ireland</p>	<p><b>Project Code:</b> 1702A  <b>Project Lead:</b> MH/PS  <b>Drawn By:</b> PK  <b>Job No.:</b> 1702A  <b>Purpose:</b> Planning</p>	<p><b>Scale @ A0:</b> 1:500  <b>Date:</b> 29-03-2022  <b>Revision:</b> 1  <b>Status:</b> S0</p>
---	---	---	---

<p><b>Project:</b> Blakes Esmonde SHD  <b>Location:</b> Stillorgan  <b>Client:</b> Cairn Homes Properties Ltd</p>	<p><b>Drawing Title:</b> Dual Aspect Units Floor 06 to RL  <b>Drawing No.:</b> 1702A-OMP-ZZ-ZZ-DR-A-1301</p>
---	--

Any reference to fire safety design or performance is presented for coordination purposes only. Refer only to the granted Fire Safety Certificate, and fire consultant's information for fire safety design, specification and performance.  
 Figured dimensions only to be used. This drawing is copyright of O'Mahony Pike Architects Ltd. All information is shared as per approved use in accordance with ISO19650-2:2018, Table 5; Standard Codes for Suitability of Models and Documents and the BEP. If the 'Status' field is empty, this information has been shared at S0 - WIP.